

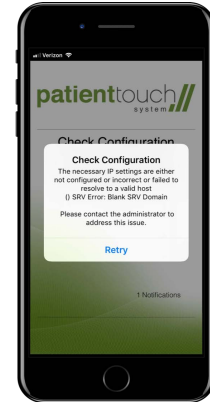
Printing Specimen Labels with *PatientTouch*



Specimen collection and labeling is performed with the PatientTouch iOS application.

The PatientTouch app comes pre-installed on your work iPhone or can be downloaded from the iTunes app store.

If you see a "Check Configuration" alert in the PatientTouch app, you must change your app settings.



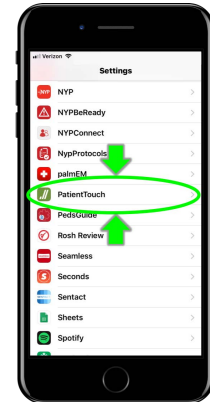
Step #1

Open your iPhone settings.



Step #2

In settings, scroll down to select the PatientTouch application.



Step #3

Enter the correct IP address:

For Columbia:
nyp-mil-psserver.sis.nyp.org

For Cornell:
nyp-cor-psserver.sis.nyp.org

* You must change the IP address when you switch between campuses

