

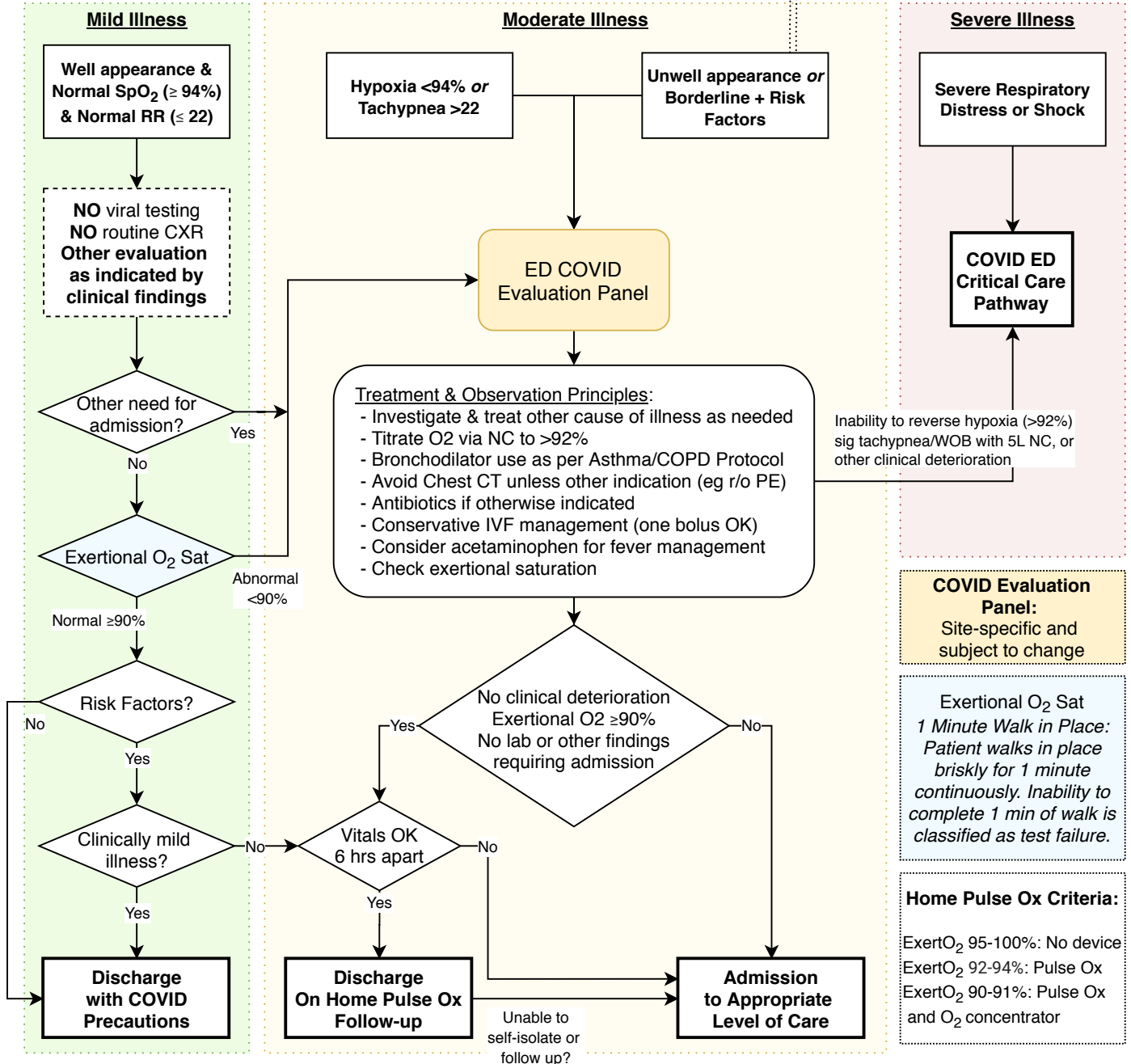
Evaluation Pathway for ED Patients with Possible COVID Infection

Applies to: Adult patients presenting to the ED with symptoms possibly related to COVID-19 infection, including: fever, URI symptoms, respiratory symptoms, gastrointestinal symptoms, malaise, or fatigue.

This pathway is a guide and does NOT supersede good clinical judgement.

- All patients must perform hand hygiene and wear a surgical mask
- All patients must be placed on **droplet + contact isolation**
- Use of nebs, HFNC, NIV or other aerosolizing procedures requires **airborne + droplet + contact isolation**

Risk Factors
Age >50, HTN, DM, CVD, CKD, Lung disease, Obesity, Immunosuppression



1. World Health Organization. Clinical management of severe acute respiratory infection (SARI) when COVID-19 disease is suspected. March 2020
2. Alhazzani W, et al. Surviving Sepsis Campaign: Guidelines on the Management of Critically Ill Adults with Coronavirus Disease 2019 (COVID-19). SCCM
3. Shi Y, et al. Host susceptibility to severe COVID-19 and establishment of a host risk score: findings of 487 cases outside Wuhan. Critical Care. 2020 Mar 18;24(1):108.
4. Yang J, et al. Prevalence of comorbidities in the novel Wuhan coronavirus (COVID-19) infection: a systematic review and meta-analysis. IJID Mar 2020.
5. Zhou F, et al. Clinical course and risk factors for mortality of adult inpatients with COVID-19 in Wuhan, China: a retrospective cohort study. The Lancet. 2020 Mar 11.